



PARENT UPDATE FROM DR. STELLA SUPERINTENDENT OF SCHOOLS

March 1, 2012

www.woodbridge.k12.ct.us Woodbridge School District
40 Beecher Road (south) - Woodbridge, CT 06525 - 203-387-6631

New Primary Playground Coming Soon!

This week, the design for Beecher Road School primary playground was finalized with the help of the playground advisory committee, Fuss & O'Neill landscape architects and the selected playground manufacturer, Miracle Recreation Equipment Company. The final design is the result of much input from students and the playground committee comprised of staff, administrators, faculty and parents. The new playground will replace the 24-year-old North playground structure which was demolished due to safety concerns this past December. Construction for the new playground is scheduled to commence the last week in March, 2012 and is planned to open for student use the second week in April, 2012.

The overall size and location of the playground will remain similar to the previous playground. However, the new structures provide an increase in play value and will be able to accommodate more children at one time (capacity of 100 children compared to previous 70). Key elements of the playground include a main structure with various slides, climbing and hanging equipment; separate rope climbing structure and spinning component; and the existing swing set. Surface materials will consist of poured-in-place rubberized safety surfacing under the main structure and engineered wood fiber under the freestanding elements. The new playground is also designed for inclusive play and will be made accessible via a new ADA accessible walk, ADA transfer points on the main structure and a therapeutic swing seat attached to the existing swing set.

To provide cost savings and direct the most dollars possible towards play equipment, the committee has opted to pursue a *community build* option and will be seeking volunteers to assist in constructing the new playground over the weekend of March 30-April 1. The PTO will be putting out requests for volunteers soon so look for more information from them on how to sign up and help out.

Planning is also underway for the design of a new South playground to accommodate the school's intermediate grades. Look forward to updates as we move forward!



Beecher Road School
Woodbridge, CT



Future playground rendering from Miracle



Fossil Bluff Climber



Typhoon Slide



Webscape Pegasus



Monospike



70° Tri-Ring Overhead Climber



Rocky Bluff Climber



Kids' Paradise Climber



Scale n' Slide



Symphony Swing (12)



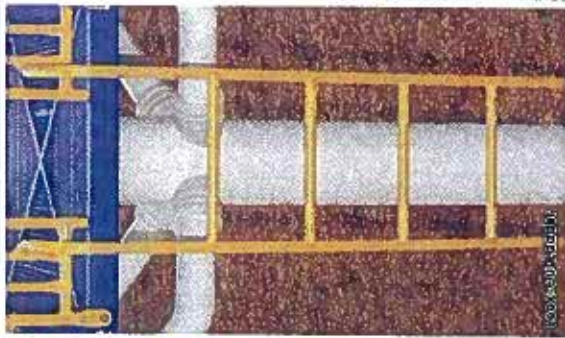
College Climber



Uphill Climber



Climb It!



Color Climber



Climb It!